



VPN Configuration Guide

D-Link DFL-800

Revision 1.0.0

equinux AG and equinux USA, Inc.

© 2007 equinux USA, Inc. All rights reserved.

Under the copyright laws, this manual may not be copied, in whole or in part, without the written consent of equinux AG or equinux USA, Inc. Your rights to the software are governed by the accompanying software license agreement.

The equinux logo is a trademark of equinux AG and equinux USA, Inc., registered in the U.S. and other countries.

Every effort has been made to ensure that the information in this manual is accurate. equinux is not responsible for printing or clerical errors.

Created using Apple Pages.

www.equinux.com

Apple, the Apple logo, iBook, Mac, Mac OS, MacBook, PowerBook are trademarks of Apple Computer, Inc., registered in the U.S. and other countries.

Finder and Mail are trademarks of Apple Computer, Inc. AppleCare is a service mark of Apple Computer, Inc., registered in the U.S. and other countries.

FileMaker is a trademark of FileMaker, Inc.

equinux shall have absolutely no liability for any direct or indirect, special or other consequential damages in connection with the use of the quick setup guide or any change to the router generally, including without limitation, any lost profits, business, or data, even if equinux has been advised of the possibility of such damages.

Introduction..... 5

Prerequisites.....6

Scenario..... 7

Task 1 – Configure your D-Link DFL-800..... 9

 Step 1 - Setup your Objects.....10

 Step 2 – Configure your VPN Tunnel.....14

 Step 3 - Add VPN Users.....22

 Step 4 – Add IP Rules..... 26

 Step 5 – Activate your Changes.....28

Task 2 – Configure VPN Tracker..... 29

 Step 1 - Create a new Connection.....29

 Step 3 - Network Settings..... 31

 Step 4 - Authentication Settings..... 32

 Step 5 - Identifiers Settings.....33

Task 3 - Check the VPN connection..... 34

 It’s time to go out!..... 34

 Test your connection..... 34

Troubleshooting.....37

What’s next?..... 38

 Introduction..... 38

 Known Limitations.....38

 Accessing Files..... 39

 Accessing a FileMaker Database..... 41

Acquire more Licenses.....45

Introduction

This document describes how VPN Tracker can be used to establish a connection between a Macintosh running Mac OS X and a D-Link DFL-800 router.

The D-Link gateway is configured as a router connecting a company LAN to the Internet.

This paper is only a supplement to, not a replacement for, the instructions that have been included with your D-Link DFL-800. Please be sure to read those instructions and understand them before starting.

EQUINIX SHALL HAVE ABSOLUTELY NO LIABILITY FOR ANY DIRECT OR INDIRECT, SPECIAL OR OTHER CONSEQUENTIAL DAMAGES IN CONNECTION WITH THE USE OF THE HOW-TO OR ANY CHANGE TO THE ROUTER GENERALLY, INCLUDING WITHOUT LIMITATION, ANY LOST PROFITS, BUSINESS, OR DATA, EVEN IF EQUINIX HAS BEEN ADVISED OF THE POSSIBILITY OF SUCH DAMAGES.

Prerequisites

First you have to make sure to use a recent D-Link DFL-800 firmware version. The latest release for your D-Link firewall can be obtained from <http://www.d-link.com/>

For this document, firmware version 2.11.03 has been used.

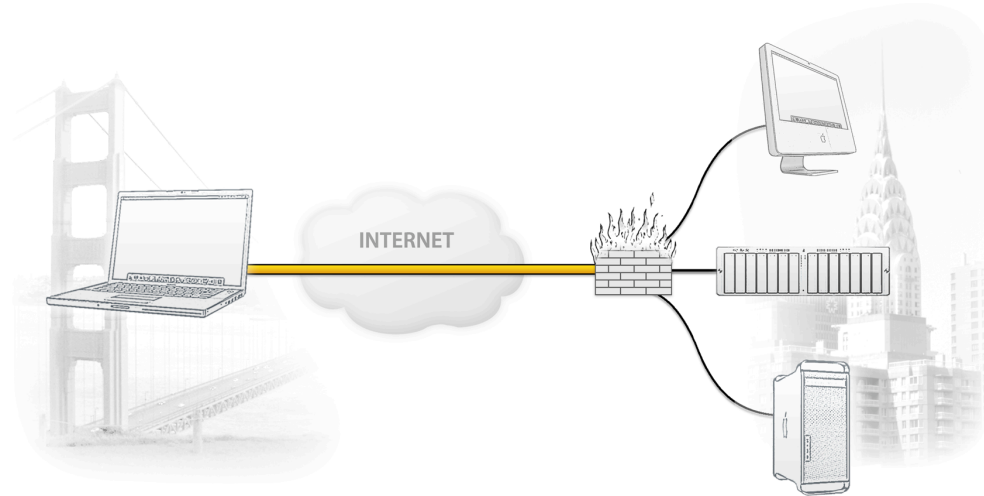
Please note: VPN Tracker has been only been tested with the D-Link DFL-800 and the above firmware version.

You will need one VPN Tracker Personal Edition license for each Mac connecting to the DFL-800.

We recommend one VPN Tracker Professional Edition for the administrator's Mac in order to export configuration files to the clients. VPN Tracker is compatible with Mac OS X version 10.2.5+, 10.3 and 10.4.1+

Scenario

In our example, we need to connect an employee's Mac Book in San Francisco to an office in New York. The following diagram illustrates this scenario:



The MacBook is directly connected to the Internet and has a public IP address, assigned by an ISP.

The office's VPN gateway is also connected to the Internet and can be accessed via a static IP address. The VPN gateway also has a second interface which is connected to the internal office network. In our example, the office network has the IP range 192.168.13.0/24.

A VPN tunnel will be established between the public interfaces in San Francisco and New York. Once the VPN tunnel is up, San Francisco can access the office network behind the VPN gateway.

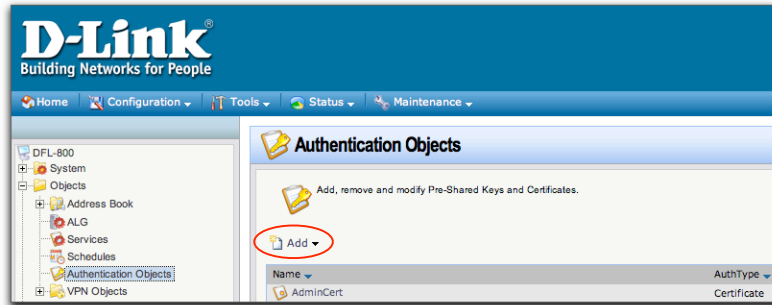
Please note that the connection from a MacBook at home to an office network is just one possible scenario. The instructions also apply to connections from a desktop computer or notebook in your office to a VPN gateway at home or at another office. Please adapt the term "office network", which is used throughout this manual, to your scenario.

Task 1 – Configure your D-Link DFL-800

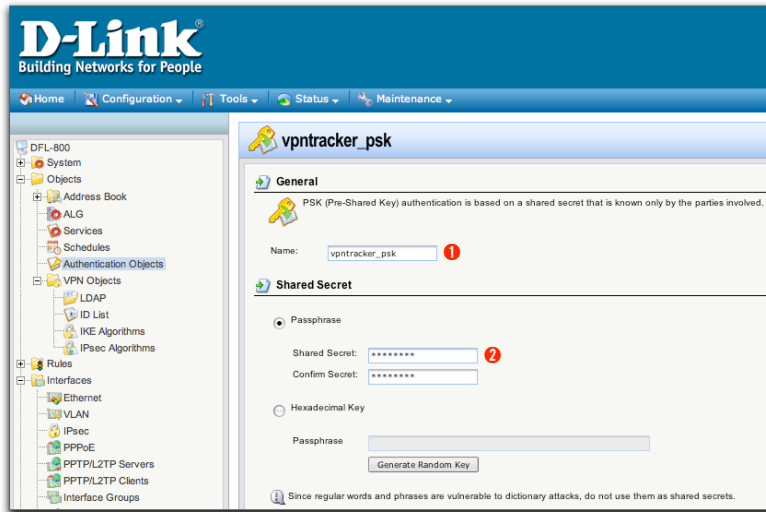
This section describes the configuration of your D-Link DFL-800 router.

When setting up a VPN, you'll have to handle a couple of parameters. Those parameters are marked with red dots with little numbers in it. Throughout the setup we will point back to those parameters.

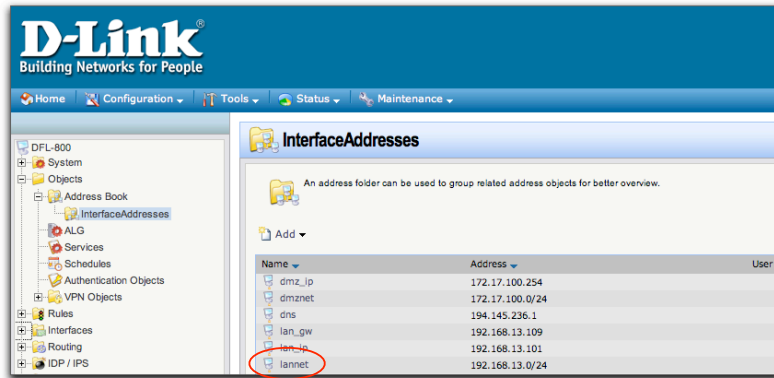
Step 1 - Setup your Objects



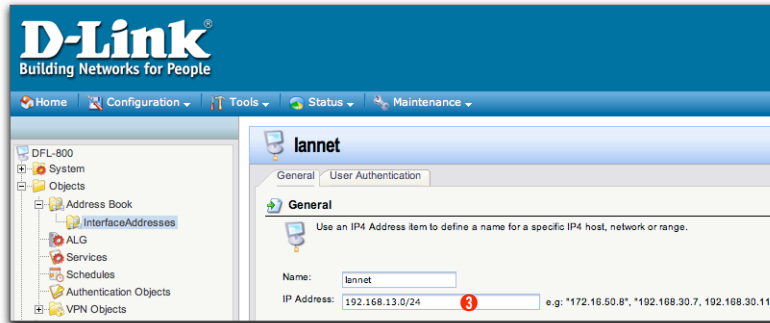
- ▶ Connect to your DFL-800
- ▶ Select "Objects > Address Book > Authentication Objects"
- ▶ Click "Add"



- ▶ Assign a name to the key object (e.g. "vpntracker_key") 1
- ▶ Specify the desired passphrase 2
- ▶ Click "OK"

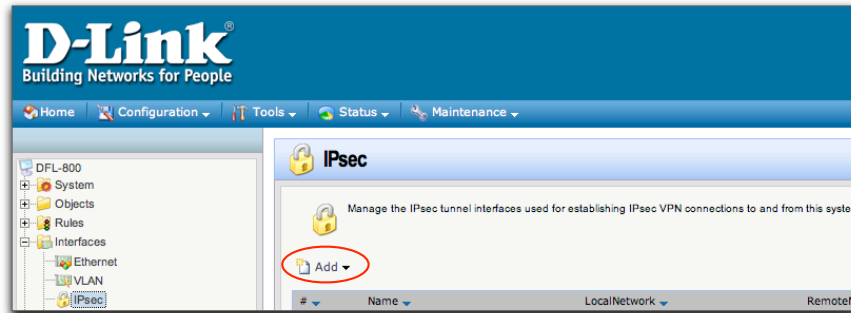


- ▶ Select "Objects > Address Book > InterfaceAddresses"
- ▶ Click "lanenet"

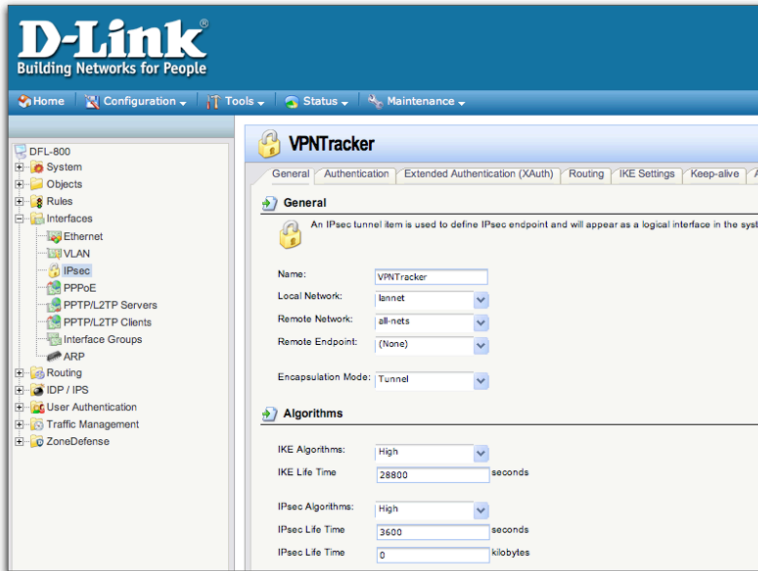


- ▶ Set the network's IP address, along with its subnet mask (e.g. "192.168.13.0/24") 3

Step 2 – Configure your VPN Tunnel



- ▶ Select "Interfaces > IPsec"
- ▶ Click "Add"



- ▶ **Name:** Choose a (unique) name for your VPN Tunnel
- ▶ **Local Network:** Choose the address object for your local network
- ▶ **Remote Network:** Choose "all-nets"
- ▶ **IKE Algorithm:** Choose "High"
- ▶ **IKE Life Time:** Enter "28800"
- ▶ **IPSec Algorithm:** Choose "High"
- ▶ **IPSec Life Time:** Enter "3600"



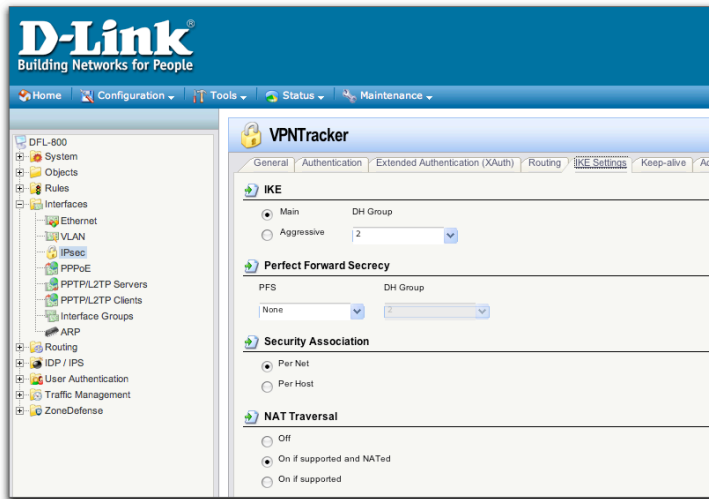
- ▶ Switch to the "Authentication" tab
- ▶ Select Pre-shared Key and your key object ①



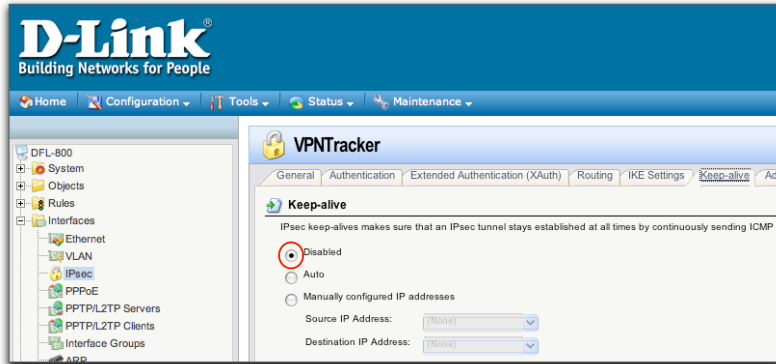
- ▶ Switch to the “Extended Authentication (XAUTH)” tab
- ▶ Select “Require IKE XAuth user authentication for inbound IPsec tunnels”



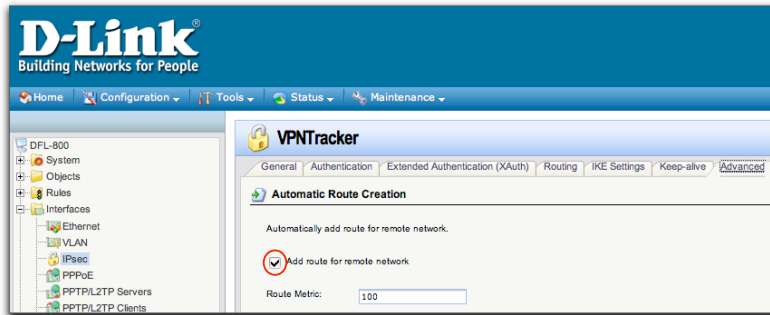
- ▶ Switch to the “Routing” tab
- ▶ Activate “Dynamically add route for the remote network when a tunnel is established”



- ▶ Switch to the "IKE Settings" tab
- ▶ Make sure that all settings match the settings in the screenshot to the left (these are the factory default settings)



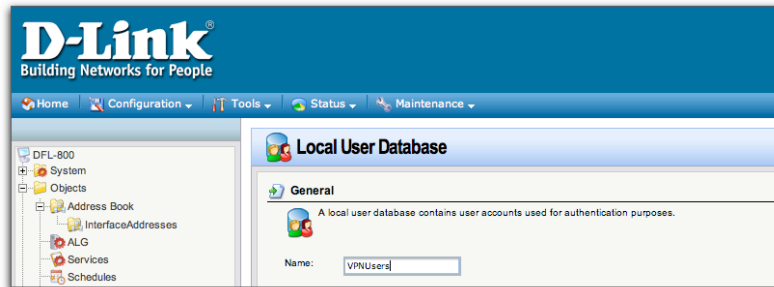
- ▶ Switch to the "Keep-alive" tab
- ▶ Select "Disabled"

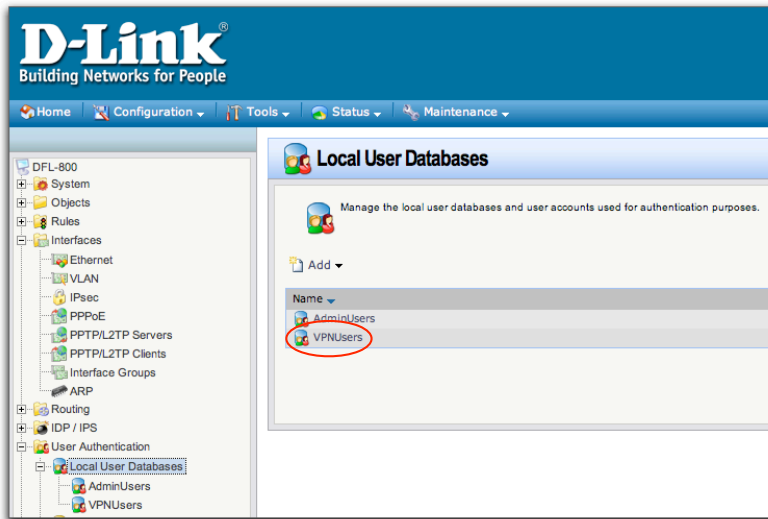


- ▶ Switch to the “Advanced” tab
- ▶ Activate “Add route for remote network”

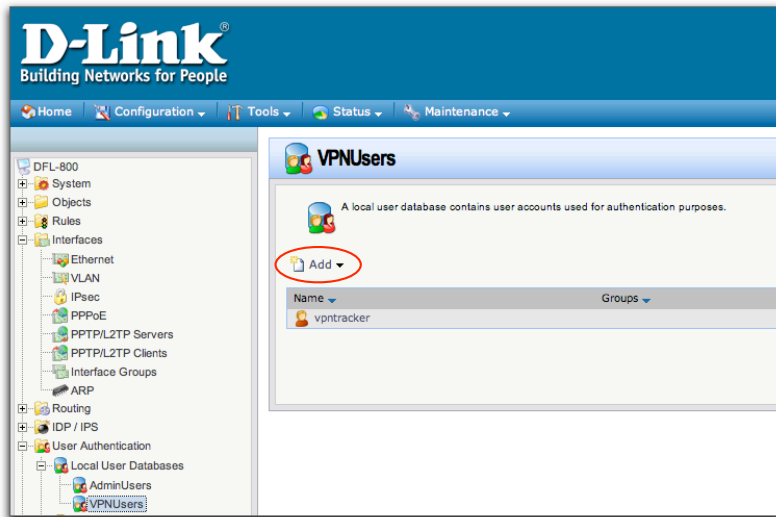
Step 3 - Add VPN Users

- ▶ Select "User Authentication > Local User Database"
- ▶ Click "Add" to add a new user database
- ▶ Select a name for your database
- ▶ Click "OK" to save it

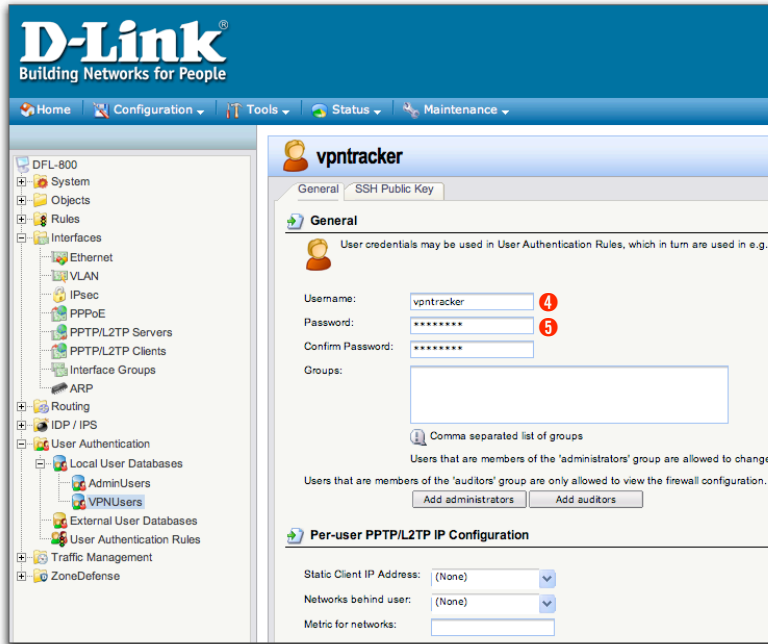




- ▶ In the list of local user databases, click the newly created database (e.g. "VPNUsers")



▶ Click "Add" to add a new user to the VPNUsers database

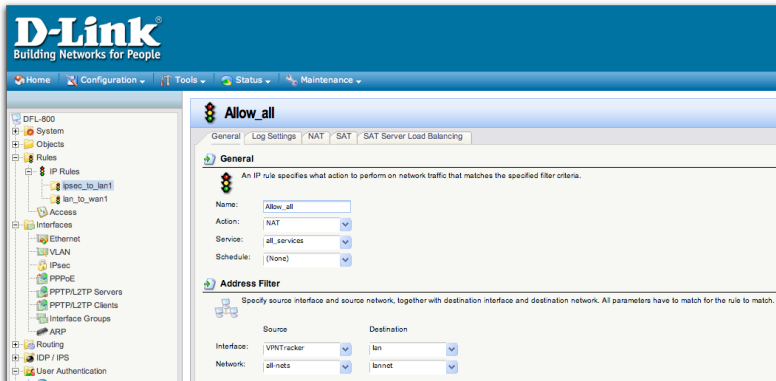


- ▶ Enter a unique user name **4** and password **5**
- ▶ Click "OK"

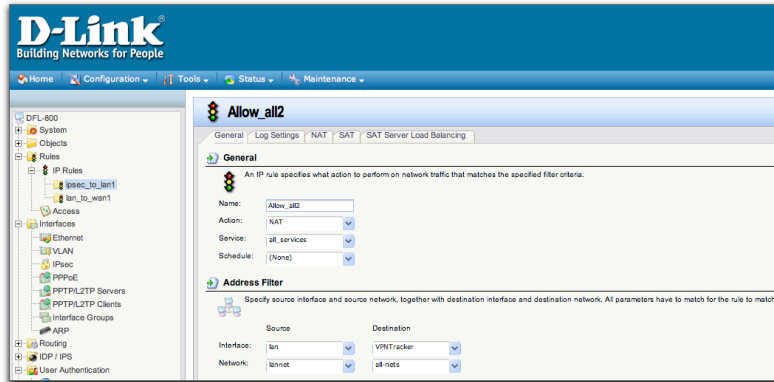
Step 4 – Add IP Rules



- ▶ Select "Rules > IP Rules"
- ▶ Click "Add" to add a new group of rules
- ▶ Select a name for your group
- ▶ Click "OK"
- ▶ Select the new rule group in the list of groups
- ▶ Click "Add" to add a new rule



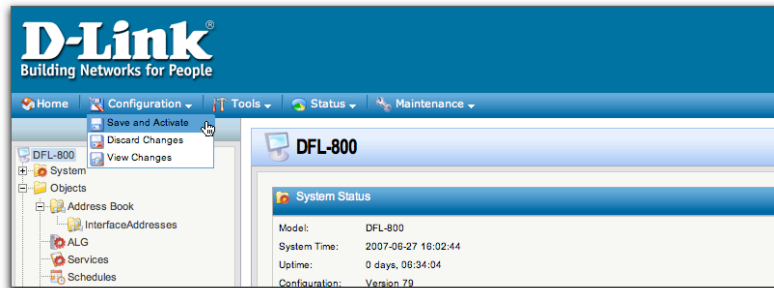
- ▶ **Name:** Choose a unique name (e.g. "ipsec_inbound")
- ▶ **Action:** "NAT"
- ▶ **Service:** "all_services"
- ▶ **Schedule:** "(None)"
- ▶ **Source Interface:** Your policy's name (e.g. "VPNTracker")
- ▶ **Source Network:** "all-nets"
- ▶ **Destination Interface:** "lan"
- ▶ **Destination Network:** "lan-net"
- ▶ Click "OK"



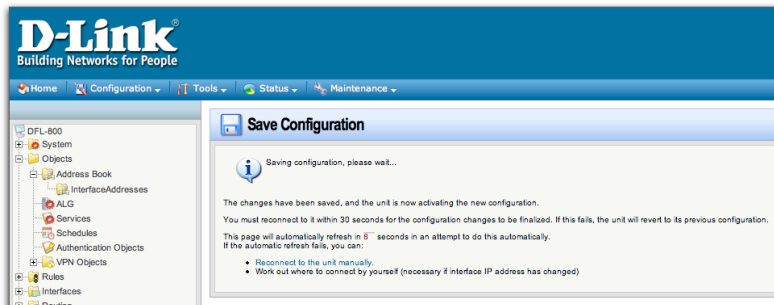
- ▶ Click "Add" to add a new rule
- ▶ **Name:** Choose a unique name (e.g. "ipsec_outbound")
- ▶ **Action:** "NAT"
- ▶ **Service:** "all_services"
- ▶ **Schedule:** "(None)"
- ▶ **Source Interface:** "lan"
- ▶ **Source Network:** "lan-net"
- ▶ **Destination Interface:** Your policy's name (e.g. "VPNTracker")
- ▶ **Destination Network:** "all-nets"
- ▶ Click "OK"

Step 5 – Activate your Changes

- ▶ Select “Configuration > Save and Activate”
- ▶ Confirm the changes



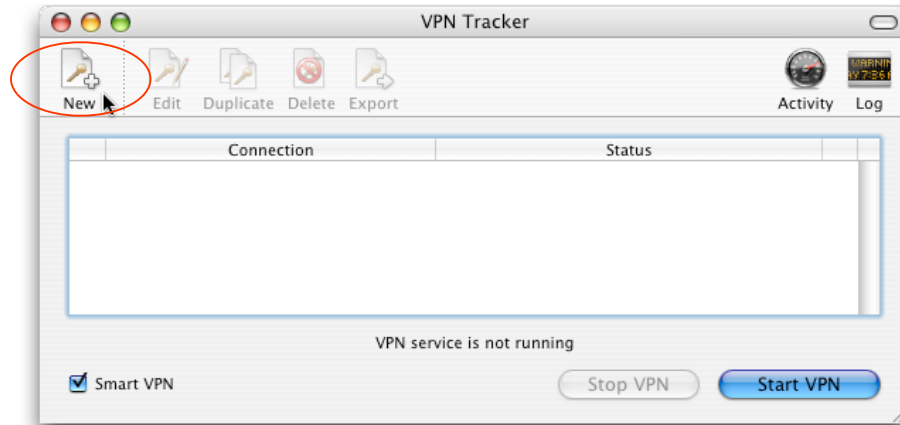
- ▶ Wait for the DFL-800 to reboot



Task 2 – Configure VPN Tracker

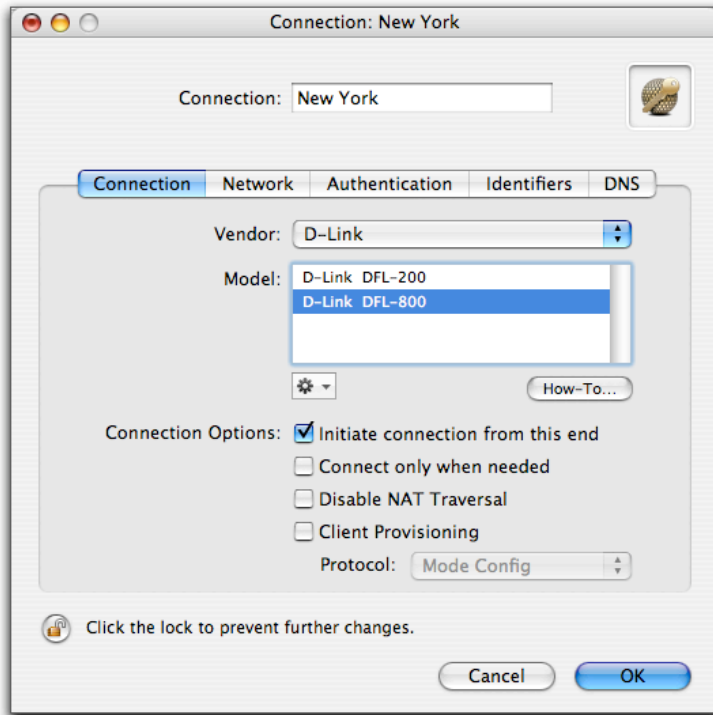
This section describes the configuration of VPN Tracker for your D-Link router.

Step 1 - Create a new Connection



► Click on "New" in the VPN Tracker main window.

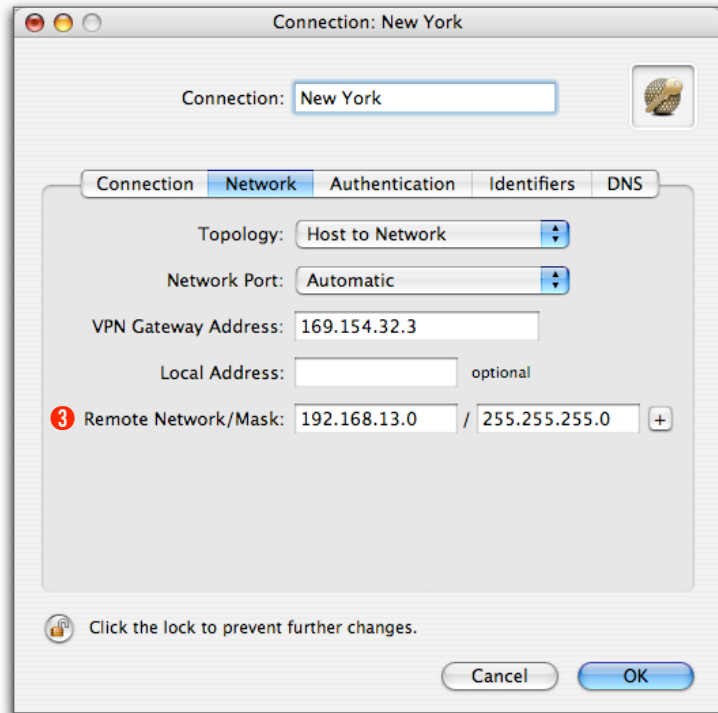
Step 2 – Connection Settings



- ▶ Select the vendor (D-Link)
- ▶ Select your VPN router model (DFL-800)
- ▶ Make sure to enable “Initiate connection from this end”

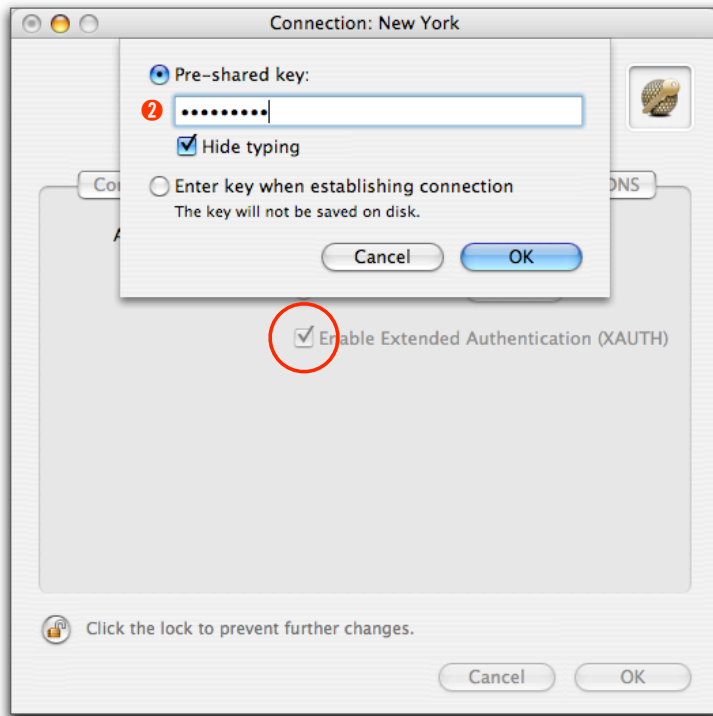
TIP The pre-defined VPN Tracker connection for the D-Link DFL-800 VPN router is based on the default settings for your D-Link DFL-800 VPN router. If you or the administrator changed any of the settings while configuring the device, you might have to adjust the connection type in VPN Tracker by double-clicking the model.

Step 3 – Network Settings



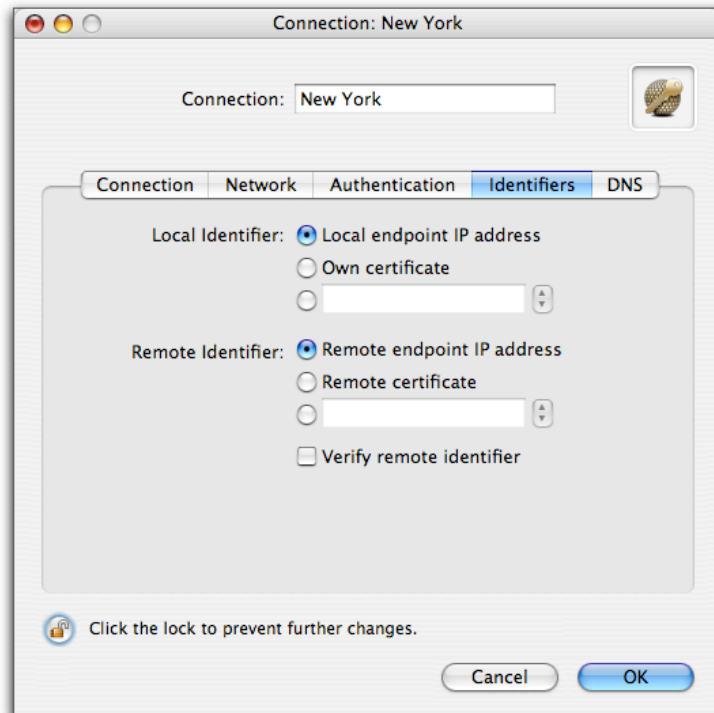
- ▶ **VPN Server Address:** public IP address of your VPN Gateway (e.g. 169.154.19.12)
- ▶ **Remote Network/Mask:** network address and netmask of your office network 3

Step 4 – Authentication Settings



- ▶ **Pre-shared key:** Enter the pre-shared key you used earlier when configuring the D-Link DFL-800 **2**
- ▶ Make sure to check "Enable Extended Authentication (XAUTH)"

Step 5 - Identifiers Settings



- ▶ Please use the local / remote endpoint IP addresses as identifiers

Task 3 - Check the VPN connection

This section explains how to start and test your VPN connection.

It's time to go out!

You will not be able to test and use your VPN connection from within your office network. In order to test your connection, you'll need to connect from a different location. That's why it's now time to go out. Take your MacBook Pro and have a coffee at your favorite Internet cafe or go visit a friend.

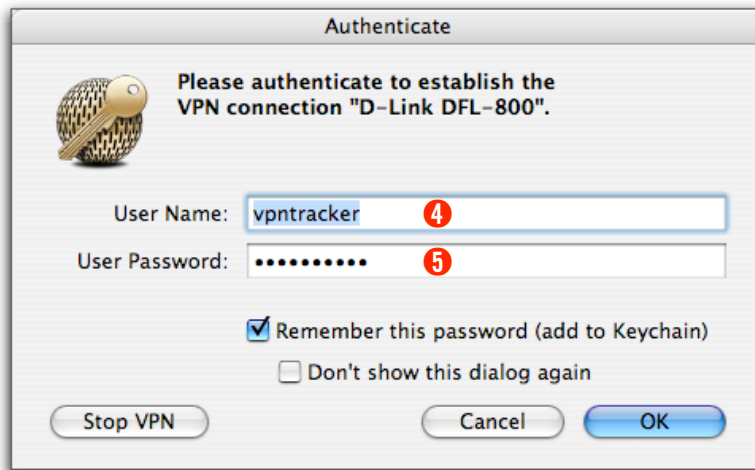
Test your connection

To test if everything is setup correctly please follow the steps below:

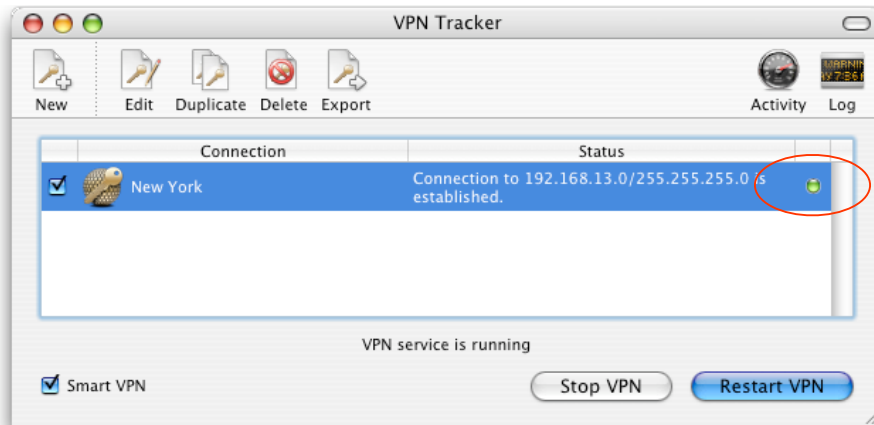
- ▶ Get access to the Internet
- ▶ Make sure the Internet connection is working; open your Internet browser and try to connect to <http://www.equinux.com>
- ▶ Start VPN Tracker if it's not already running



- ▶ Select the connection you configured for your D-Link device
- ▶ Hit the **Start VPN** button



- ▶ Provide the username **4** and password **5** defined earlier
- ▶ Click **OK**



- ▶ If the light turns red after a few seconds, then please read the **Troubleshooting** section on the next page
- ▶ If the light turns green, that means you've successfully established a connection

Congratulations! You did it!

Troubleshooting

I don't get a green light in the VPN Tracker main window

- ▶ Make sure that your computer is not connected directly to the office network you want to connect to.
- ▶ Make sure, that the **Identifier** and the **Pre-shared key** you've entered in the router configuration match the settings you entered in VPN Tracker.
- ▶ Verify that the **public IP address** you entered in VPN Tracker matches the public IP address of your router.
- ▶ Download our sample configuration and connect to our test device at <http://www.vpntracker.com/connectiontest/>
 - If the test connection cannot be established: Make sure, that the internet connection is working and verify that your local router is not blocking any connection attempts.
 - If the test connection is established successfully: Your internet connection is working and does not block VPN connections. Please check the log file of your D-Link DFL-800 for error messages.
- ▶ If you're still having issues with your connection, please create some screenshots of your settings on both ends, gather the log files and send them over to our support team via <http://www.equinux.com/us/products/vpntracker/contactus.html>.

What's next?

This section explains how to use your VPN connection.

Introduction

As the VPN connection has now been established, you should be able to access most of the resources in your office network.

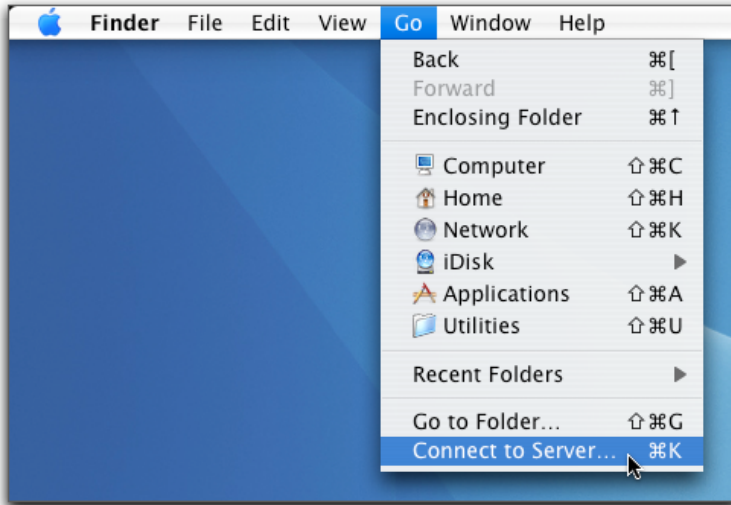
Known Limitations

There are some limitations of a VPN connection compared to a direct connection to a office network.

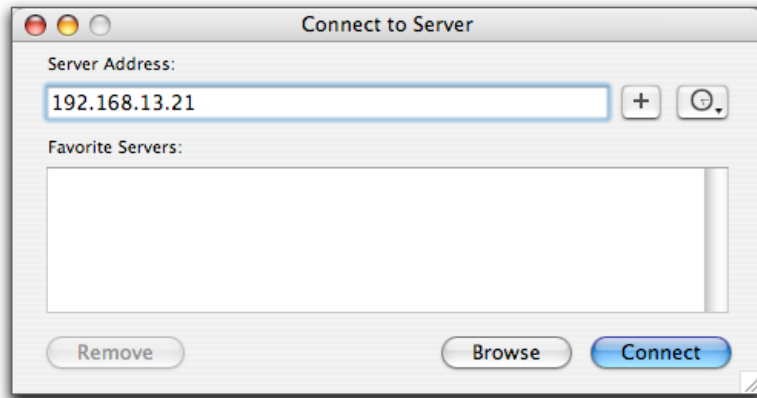
- ▶ **Bonjour:** As Bonjour Chat is not supported over a VPN tunnel, you'll need to use iChat server in order to chat remotely.
- ▶ **Browsing the network:** You can't "browse" the remote network as you're normally used to. You need to connect to each machine manually, as described on the next page.

Accessing Files

To access files in your office network, just follow the steps below:



- ▶ Go to the **Finder** application
- ▶ In the menu bar, click on **Go->Connect To Server...**



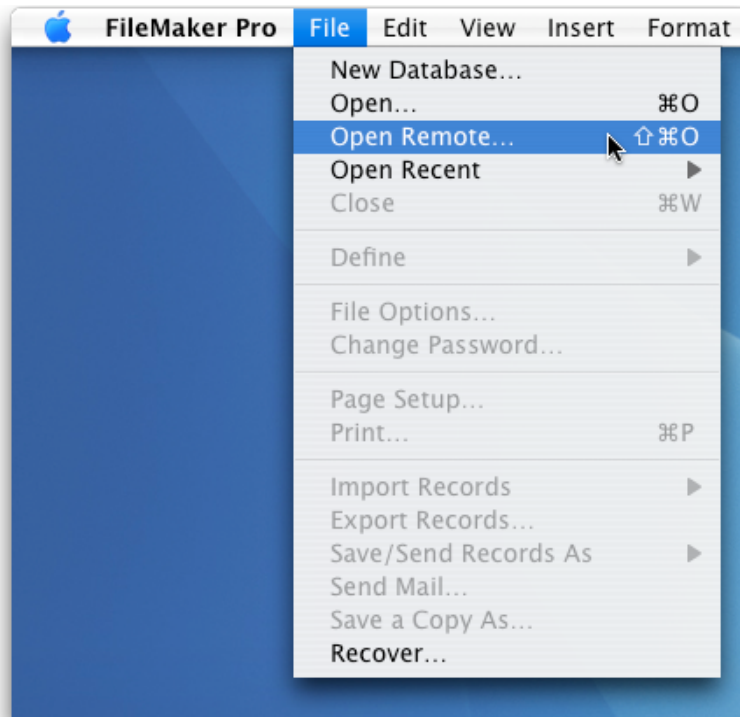
- ▶ Enter the IP address of the machine you want to connect to. In our example network this would be the IP address **192.168.13.21**
- ▶ Click on the **Connect** button
- ▶ Enter your **Username** and **Password** to access the files

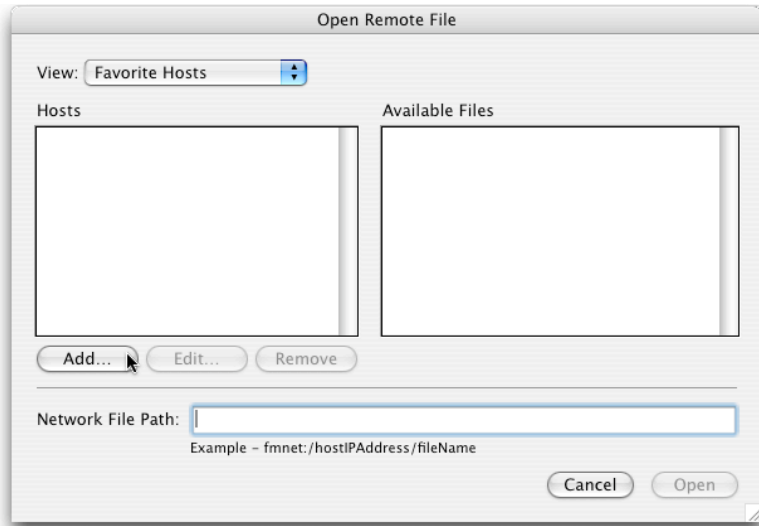
TIP When connecting to a Windows fileserver, you'll need to prefix the IP address with "smb://"; e.g. "smb://192.168.13.21".

Accessing a FileMaker Database

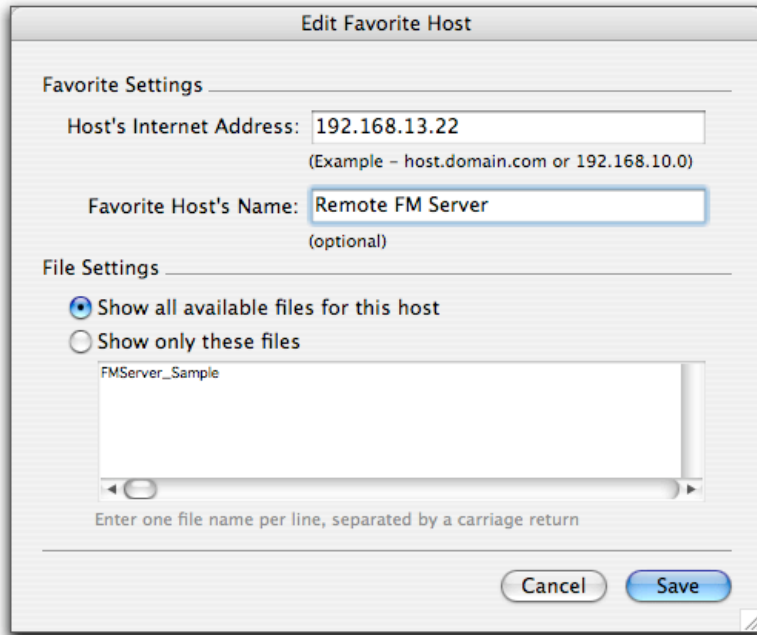
To access a database available in your office network, just follow the steps below:

- ▶ Start the **FileMaker** application
- ▶ In the menu bar, click on **File->Open Remote...**

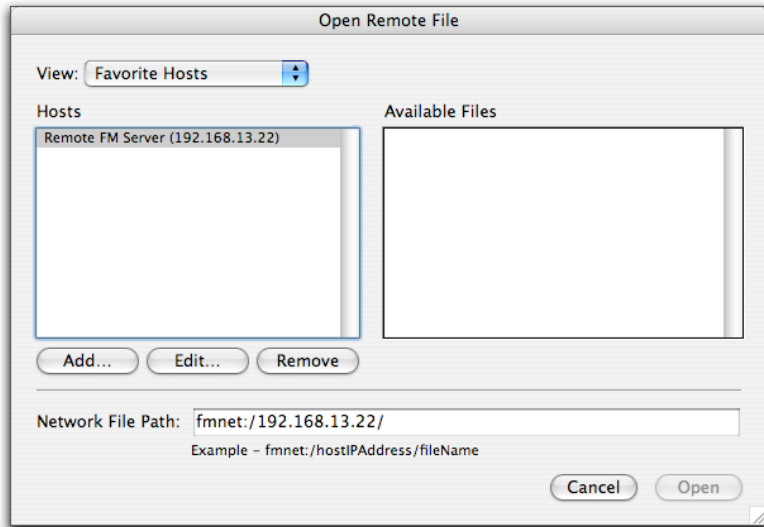




▶ Click on the **Add...** button



- ▶ Enter the **IP address** of the FileMaker server machine
- ▶ Enter a hostname for this machine (optional)
- ▶ Click on the **Save** button



- ▶ Select a database from the list of **Available Files** and click **Open**
- ▶ You are now able to access your FileMaker databases as usual

Acquire more Licenses

If two or more people need to access your office network via VPN, then you need to acquire more VPN Tracker licenses.

To get more licenses, please contact your reseller and inquire about „VPN Tracker Personal Edition“.

Or point your browser to <http://store.equinux.com> and buy additional VPN Tracker Personal Edition Licenses online.